

QUALITROL® KIT-057-1

Portable fiber optic thermometer



Compact fiber optic temperature measurement

- Easily verify probes throughout installation
- Fully functional through front interface
- Highly accurate across wide temperature ranges
- Captures measurements for later review

Product Summary

Description Single channel fiber optic thermometer with large, backlit LCD display. Battery (standard AA batteries) or universal power supply operation. Can log data onto SD flash card (2GB max) or directly to laptop using OptiLink™ software.

Application Mobile monitoring of Neoptix T2™ temperature probe during or after installation.



QUALITROL®
Defining Reliability

QUALITROL® KIT-057-1 portable fiber optic thermometer

Compact fiber optic temperature measurement

- Fits in hand, battery operated
- Rugged casing for every day field and factory use

Easily verify probes throughout installation

- Maximum user freedom to measure temperature at many critical sensing points
- No calibration between probes (saves time)

Fully functional through front interface

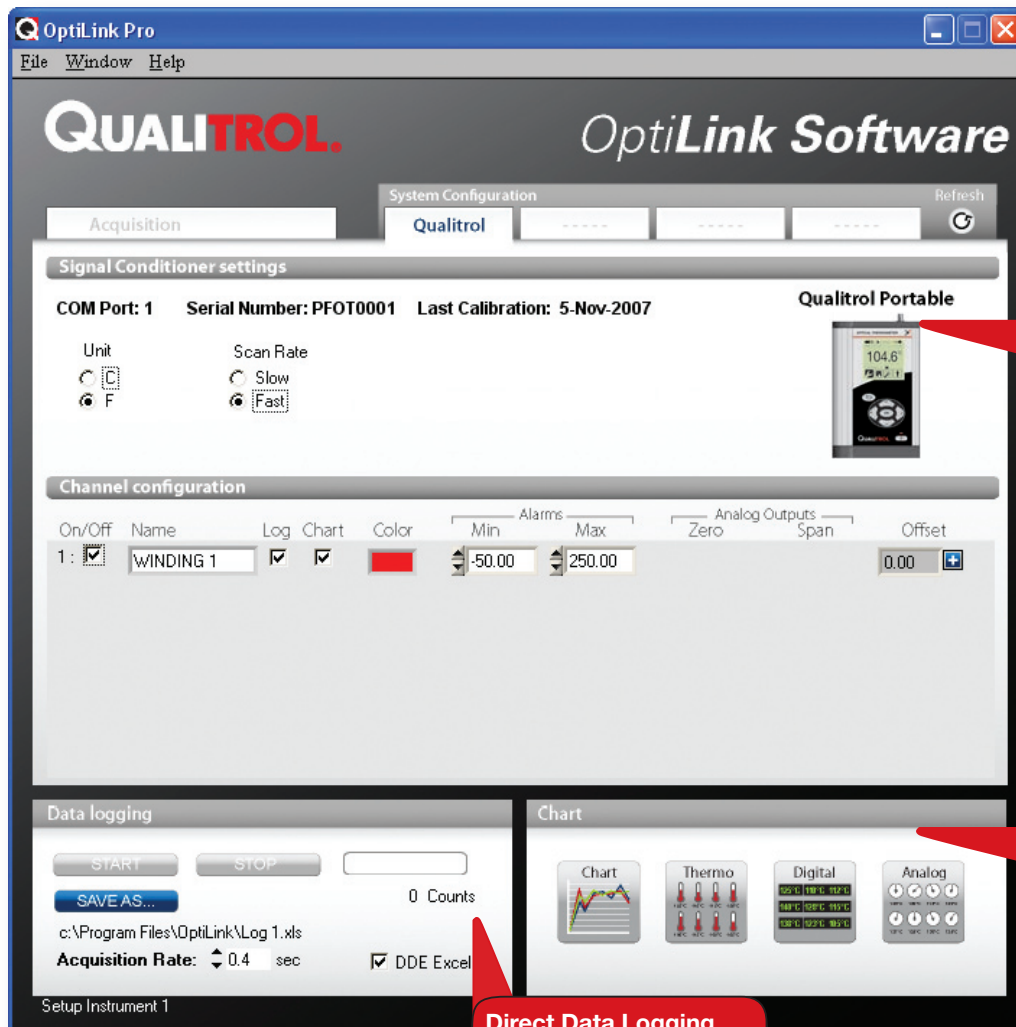
- Instrument set up and configuration, data logging on SD card and expert mode all accessible through display menu
- 160 x 160 pixel LCD display with LED backlight

Highly accurate across wide temperature ranges

- Accuracy within $\pm 0.5^{\circ}\text{C}$
- Operates from -20°C to 65°C (-4°F to 149°F) ambient temperature

Captures measurements for later review

- Data can be saved onto high capacity SD flash card for access through any PC with flash card reader
- Data logging can also be accomplished through OptiLink™ directly to computer hard disk
- SnapLog™ feature enables recording of one temperature point with time stamp at the press of a button



Device Recognition
Automatically detects attached devices (compatible with portable fiber optic thermometer and optical hot spot module)

Temperature Indication
Graphical representation of temperature including historical temperature run chart

Direct Data Logging
Save data directly to PC in MS Excel® format



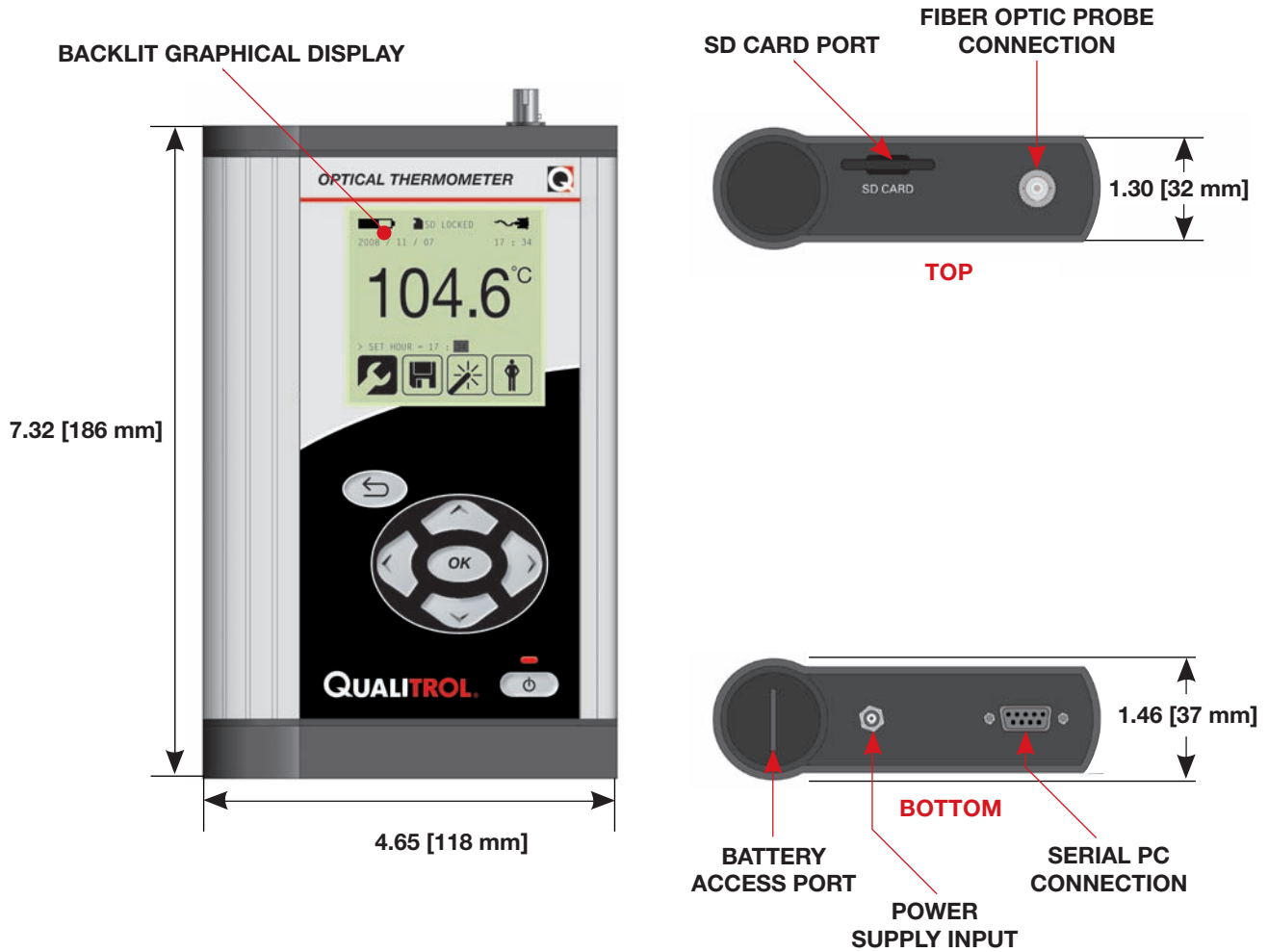
TECHNICAL SPECIFICATIONS

Communications	Hardware	RS-232
	Operating mode	OptiLink™ PC software
Power supply	Batteries	4 x AA alkaline or rechargeable batteries (included)
	Power supply	100-240 VAC, 50-60 Hz, 0.3 A
	Power consumption	1.25 watts
Environmental	Operating temperature	-20°C to 65°C (-4°F to 149°F)
	Storage temperature	-30°C to 70°C (-22°F to 158°F), non condensing
	Enclosure	IP54 standard
Mechanical	Accuracy	± 0.5°C or ± 1% FS
	Number of channels	1
	Temperature measurement range	-80°C to 300°C (-112°F to 572°F)
	Resolution	0.1°C
	Sampling rate	5 Hz
	Materials	Anodized aluminum extrusion and heavy duty die cast top and bottom end caps painted with textured black powder paint (RAL 9005)
	Connectors	Optical: 1 ST connector Serial: DB-9 Power-in: power jack connector SD card: push-to-eject card slot on top panel Batteries: battery access port on bottom side
	Weight	1.21 lbs (550 g) without batteries
Data logging	Memory capacity	Temperature plus time and date stamp in ASCII format on removeable SD flash card (2GB) or directly to PC ASCII or MS Excel®
	Record types	Running log sessions: user selectable log rate from 1 second to 1 hour SnapLog™ feature: one datapoint logging when SnapLog™ key is pushed
User interface	Display	3 inch diagonal (53mm x 53mm) graphic matrix display, 160 x 160 pixels, transfective display, yellow-green LED backlight
	Firmware	Flash ROM upgradable through serial communication



Don't see what you need?

QUALITROL regularly creates models with special customer requirements. Contact your local sales representative or QUALITROL Application Engineer to review your special requirements.



QUALITROL® Field Services

To further improve reliability, QUALITROL provides comprehensive education and on-site commissioning services, maintenance contracts and technical support to all customers worldwide. Emergency response is available on all products and services.

About QUALITROL®

QUALITROL® Company LLC manufactures substation and transformer monitoring and protection devices used by electric utilities and manufacturing companies. It is the global leader in sales and installations of transformer asset protection equipment, fault recorders and fault locators. Established in 1945, QUALITROL Company produces thousands of different types of products on demand, each customized to customers' unique requirements.

©2008 QUALITROL® Company LLC, an ISO 9001 system certified company. All rights reserved. Information subject to change without notice. All trademarks are properties of their respective companies, as noted herein. AP-M09-06L-01E.